

JUNE 1, 1996

BULLETIN

TB-96

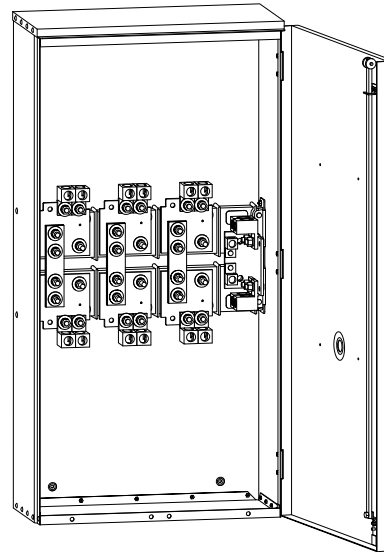


www.ericksonelectric.com

400 AMP. TO 4000 AMP.

TERMINATION BOXES

SUITABLE FOR USE ON
THE LINE SIDE OF
SERVICE EQUIPMENT

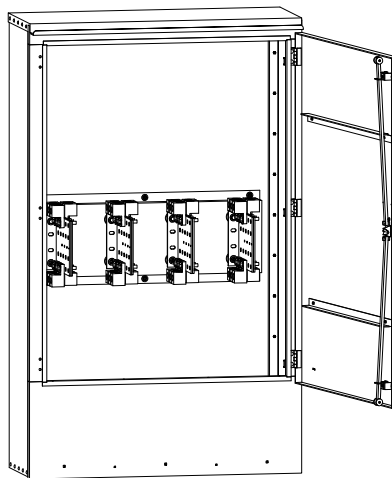


400 AMP. Thru 800 AMP.

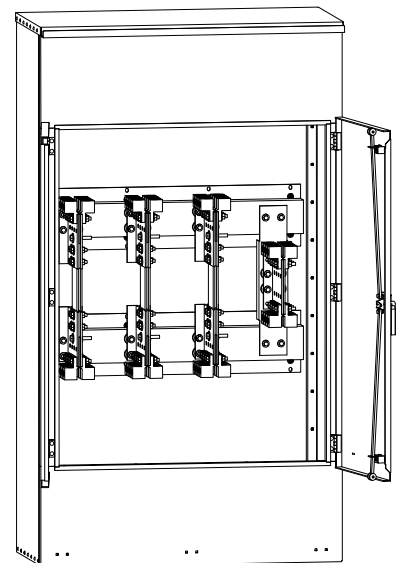


FILE NO. E113674

600 VOLT MAXIMUM
TYPE 3R ENCLOSURE
FOR
INDOOR OR
OUTDOOR USE



1200 AMP. Thru 2500 AMP.

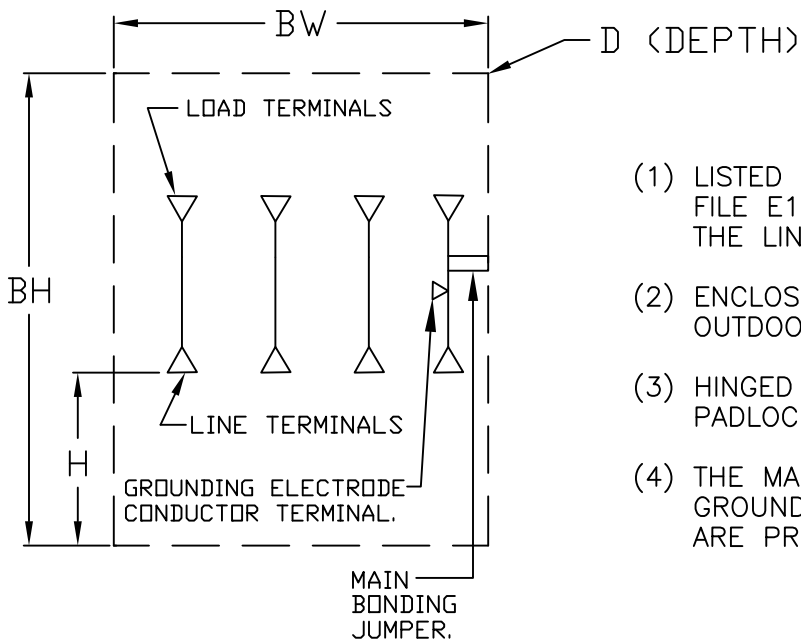


3000 AMP. Thru 4000 AMP.

ERICKSON ELECTRICAL EQUIPMENT CO.
475 BONNIE LANE • ELK GROVE VILLAGE, IL 60007
TELEPHONE: (847) 640-7701 / 1-800-952-7225
FAX: (847) 640-0565

ERICKSON ELECTRICAL EQUIPMENT CO.
400-4000 AMP TERMINATION BOXES.

AMPACITY	CATALOG NUMBERS			TERMINAL PER PHASE & NEUTRAL LINE & LOAD	ENCLOSURE SIZE				UNPROTECTED FAULT CURRENT RATING
	1 ϕ 3W	3 ϕ 3W	3 ϕ 4W		BH	BW	D	H	
400	TB-365N	TB-365	TB-465N	1	45½"	20"	7¼"	15"	42,000 Amp
600-800	TB-367N	TB-367	TB-467N	2	48"	24"	11"	16"	65,000 Amp
1200	-	TB-368	TB-468N	3	60"	36"	15"	27½"	85,000 Amp
1600	-	TB-369	TB-469N	4	60"	36"	15"	27½"	85,000 Amp
2000	-	TB-3610	TB-4610N	5	64"	40"	15"	30"	85,000 Amp
2500	-	TB-3611	TB-4611N	7	64"	40"	15"	30"	85,000 Amp
3000	-	TB-3612	TB-4612N	8	78¼"	44"	20⅝"	26"	85,000 Amp
4000	-	TB-3613	TB-4613N	10	78¼"	44"	20⅝"	26"	85,000 Amp



GENERAL NOTES:

- (1) LISTED BY UNDERWRITERS LABORATORIES INC. FILE E113674 AND SUITABLE FOR USE ON THE LINE SIDE OF SERVICE EQUIPMENT.
- (2) ENCLOSURE IS TYPE 3R FOR INDOOR OR OUTDOOR USE.
- (3) HINGED COVER IS PROVIDED WITH A PADLOCKABLE VAULT HANDLE AND DOOR STOP.
- (4) THE MAIN BONDING JUMPER AND THE GROUNDING ELECTRODE CONDUCTOR TERMINAL ARE PROVIDED PER U/L 1773 TABLE 13.1

LINE AND LOAD TERMINAL INFORMATION:

FOR CABINETS RATED 400-800 AMP EACH LINE AND LOAD TERMINAL WILL ACCEPT ONE 600KCMIL-#4 OR TWO 350KCMIL-#1/0 COPPER OR ALUMINUM CONDUCTOR. CABINETS RATED 800 AMP MAY BE EQUIPPED WITH AN ADDITIONAL LINE OR LOAD TERMINAL. (MAXIMUM OF 3 LINE OR LOAD TERMINALS PER PHASE AND NEUTRAL).

FOR CABINETS RATED 1200-4000 AMP. EACH LINE AND LOAD TERMINAL WILL ACCEPT ONE 800-300KCMIL COPPER OR ALUMINUM CONDUCTOR AND MAY BE EQUIPPED WITH UP TO 10 LINE OR LOAD TERMINALS PER PHASE AND NEUTRAL.

ERICKSON ELECTRICAL EQUIPMENT CO.
475 BONNIE LANE • ELK GROVE VILLAGE, IL 60007
TELEPHONE: (847) 640-7701 / 1-800-952-7225
FAX: (847) 640-0565